

ASSESSING THE SUITABILITY OF PANAKO FOR MUSIC IDENTIFICATION IN MOVIES

BY RUBEN NAIR
SUPERVISORS: DR. JAEHUN KIM, DR. CYNTHIA LIEM



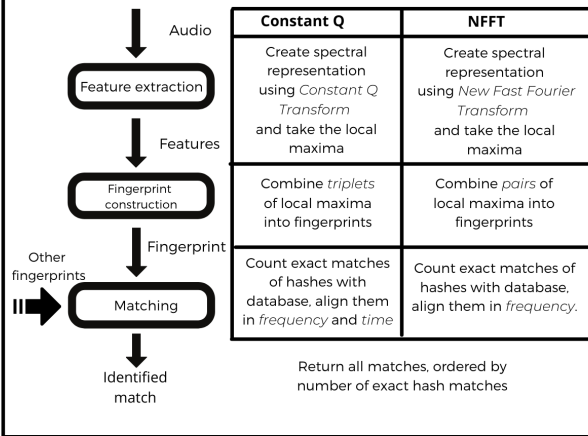
1 INTRODUCTION

This poster presents the research in assessing the suitability of Panako for movie music identification. This was done by answering the research question: How does Panako perform in music identification in movies?

This question was split into two sub-questions:

- How well does Panako perform in recognising music in movies, based on the benchmark?
- What is the influence of configurable parameters on the performance of Panako?

2 PANAKO



3 METHOD

Analysis was performed in three steps and repeated for both strategies (Constant Q and NFFT):

- Preliminary study.** Six movies were manually labeled. Clips containing music were extracted and queried using Panako's default settings.
- Analysis using the synthesised data from the benchmark.** This data was first tested with the default configuration of Panako. Then, all configurable parameters were changed. They were all doubled and halved where possible.
- Testing better configurations.** The configurations that performed better on the synthesised data than the default configuration were tested on the real movie clips from the first step.

5 CONCLUSION

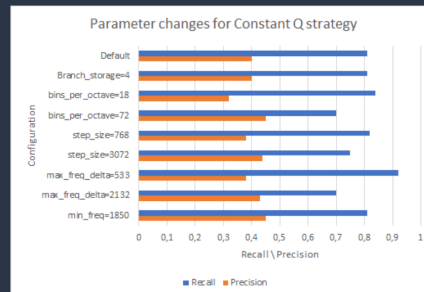
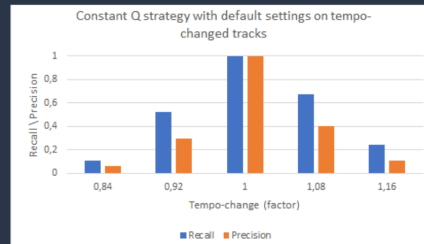
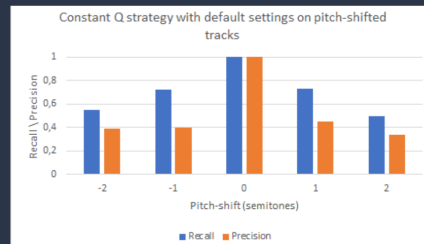
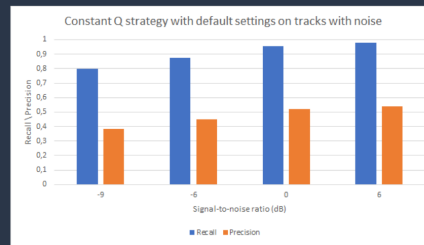
- Panako performs well on the soundtracks layered with noise, but not for pitch shifts and tempo changes.
- The configurations that performed best on the benchmark find less than 10% correct matches on real movie data, so within the scope of this research, Panako is not suitable for movie music identification.
- This research can be extended by evaluating specific combinations of parameters and more values per parameter.

4 RESULTS

Constant Q



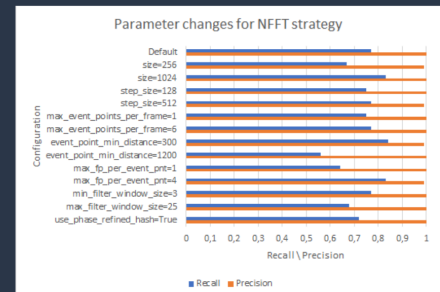
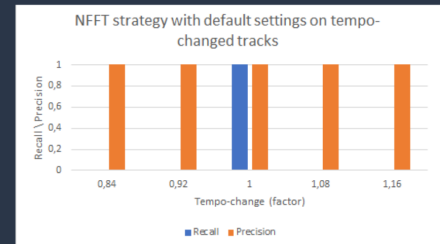
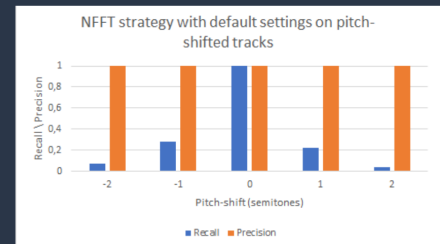
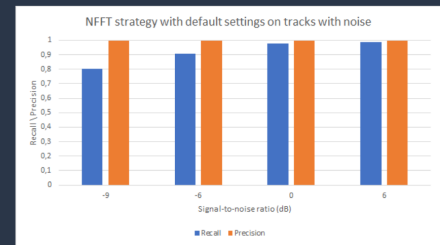
Default: **8,3%** correct matches



NFFT



Default: **0%** correct matches



Configuration Correct matches

- bins_per_octave=72 3,9%
- step_size=3072 6,9%
- max_freq_delta=533 5,4%
- min_freq=1850 9,8%
- all combined 5,4%



Configuration Correct matches

- size=1024 0%
- event_point_min_distance=300 0%
- max_fp_per_event_pnt=4 1,0%
- all combined 2,0%