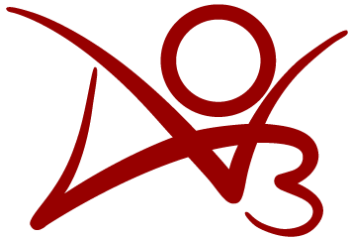


# How do the emotional journeys of characters influence fanfiction popularity?

## Corpus

319 Good Omens fanfictions from



Archive Of Our Own (AO3) an online fanfiction archive

## Extraction of emotional journeys

**BookNLP** for character & event extraction

+

**BERT** model trained on **GoEmotions** for emotional classification of events

=

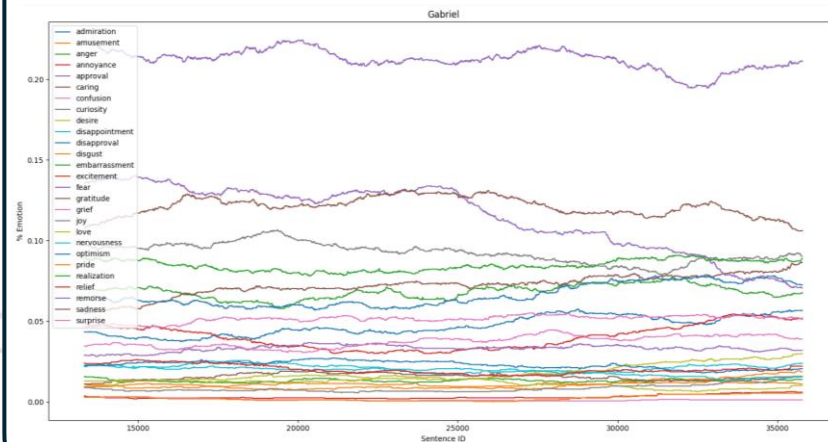


Figure 1: The emotional journey of a character, plotting **27 emotions** over the course of a fanfiction story.

## Determining correlation

Two features extracted per emotion:

- **Growth** as represented by the difference between start and end of story (delta)
  - **Fluctuation** as represented by standard deviation (stdev)
- These are averaged across characters in a fanfiction.

**Simple linear regression** is performed on each of the **54 features**, and their significance (p-values) is determined.

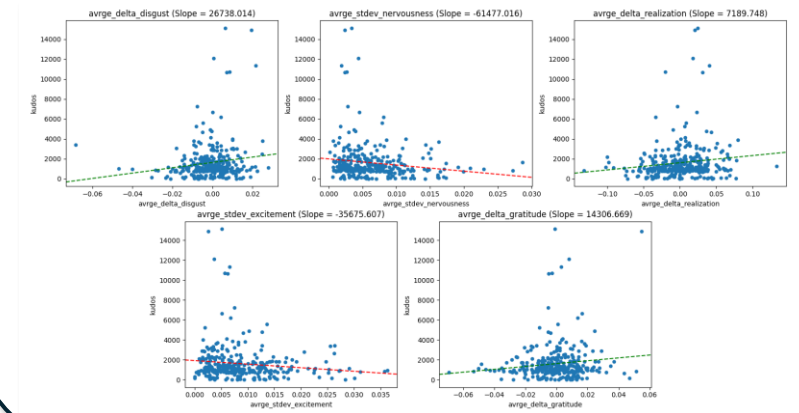


Figure 2: All significant ( $p < 0.05$ ) features plotted against fanfiction popularity.

## Conclusions

Positive impact on popularity	Negative impact on popularity
Growth in disgust	Fluctuating excitement
Growth in realization	Fluctuating nervousness
Growth in gratitude	Fluctuating emotions in general (13 most significant stdev correlations are negative)

**Author:** Julian van der Weijden

(J.vanderWeijden-1@student.tudelft.nl)

**Supervisors:** Chenxu Hao, Ivan Kondyurin

**Responsible professor:** Hayley Hung

